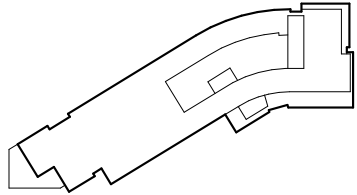




View From the West



Enterprise



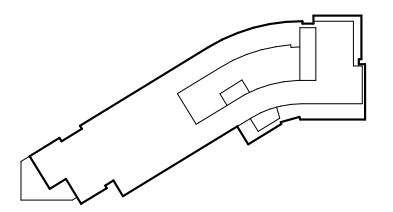
GOROVE SLADE

Aerial Massing - Future Conditions

Edgewood 5

21

Washington, DC ZONING COMMISSION
 October 23, 2020 District of Columbia
 CASE NO.66-68A
 EXHIBIT NO.25A2



View From the South

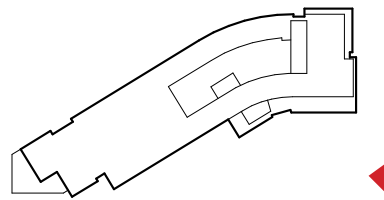
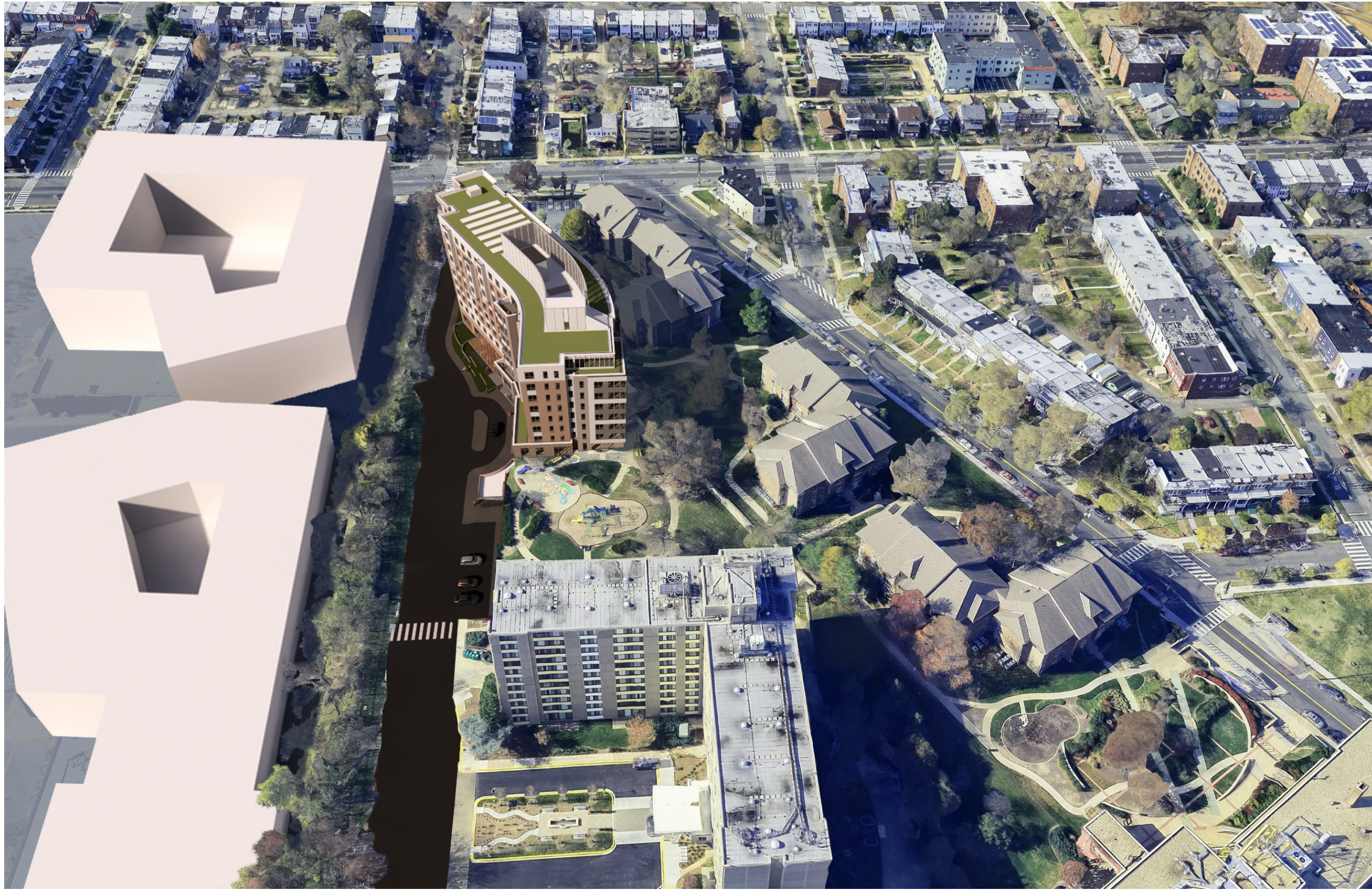


Enterprise

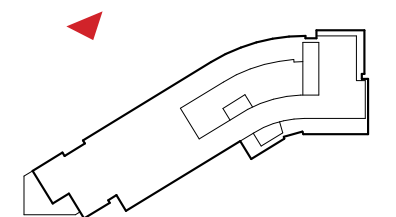


WMC *goulston&storr* **GOROVE SLADE**

Aerial Massing - Future Conditions | Edgewood 5



View From the East



View From the North

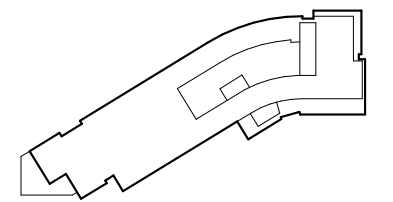


Enterprise



WMC *goulston&storrs* **GOROVE SLADE**
Landscape Architecture • Urban Design Studio

Aerial Massing - Future Conditions | Edgewood 5



View From the Northwest